

PROJECT:

GWA Drilling Module Removal

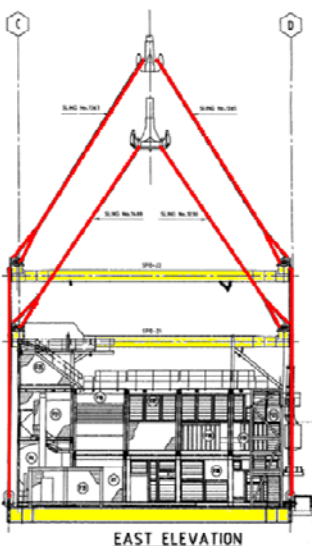
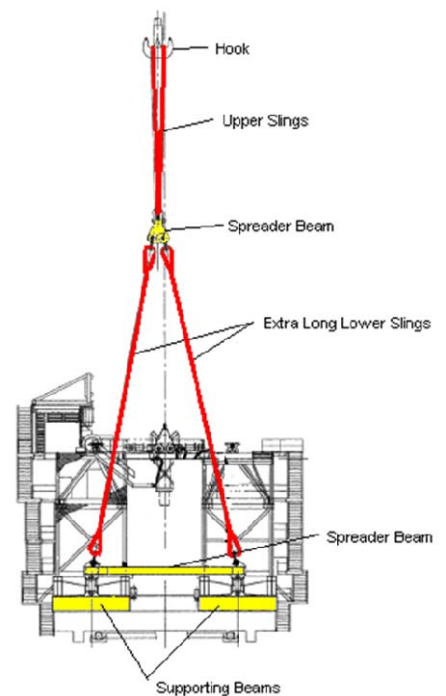
**under-promise
over-deliver**



CLIENT:
Woodside Energy Ltd
LOCATION:
North West Shelf, WA
DATE:
2014



The drilling facilities on Goodwyn Alpha (GWA) are no longer required and the operator is considering removing the facilities to maximise flexibility for future well operations, minimise ongoing operational costs and minimise health, safety and environmental risks. WEL engaged Linch-pin to provide expert decommissioning consultancy services to provide concepts for the abandonment of the drilling facilities including P₁₀, P₅₀ and P₉₀ cost estimates and a detailed schedule for the Define and Execute phases of the abandonment project.



The scope included evaluating removal options for the drilling modules and providing cost and schedule information in order for WEL to make a considered decision on which option to proceed with.

Single lift options were considered along with platform crane lift and piece small removal. The platform cranes had limited lift capability and the ongoing platform operations had to be considered.